

IDENTIFICATION STAMP  
DIVISION OF THE STATE ARCHITECT  
OFFICE OF REGULATION SERVICE  
APPL. #: 02-110916  
AC: \_\_\_\_\_ PLS: \_\_\_\_\_ SS: \_\_\_\_\_  
DATE: \_\_\_\_\_  
FILE NUMBER: 9-27

This and all other project documents are the property of LPA and shall remain the property of LPA. No part of any project or portion thereof may be reproduced, stored in a retrieval system, or transmitted in any form or by any means, electronic, mechanical, photocopying, recording, or by any information storage and retrieval system, without the prior written consent of LPA. LPA hereby grants limited access to any such project information only to those individuals and entities who are specifically named in the project information and who are authorized by LPA to receive such information. All other individuals and entities are prohibited from using, copying, or otherwise disclosing project information without the prior written consent of LPA. Project documents describe design intent of work and are not a representation of the actual or existing conditions. LPA and LPA's Consultants make no representation concerning the accuracy of drawings and are not responsible for any discrepancies between project documents and the existing conditions.  
© Copyright 2009

These drawings (and/or specifications and/or calculations) are the property of LPA and shall remain the property of LPA. No part of any project or portion thereof may be reproduced, stored in a retrieval system, or transmitted in any form or by any means, electronic, mechanical, photocopying, recording, or by any information storage and retrieval system, without the prior written consent of LPA. LPA hereby grants limited access to any such project information only to those individuals and entities who are specifically named in the project information and who are authorized by LPA to receive such information. All other individuals and entities are prohibited from using, copying, or otherwise disclosing project information without the prior written consent of LPA. Project documents describe design intent of work and are not a representation of the actual or existing conditions. LPA and LPA's Consultants make no representation concerning the accuracy of drawings and are not responsible for any discrepancies between project documents and the existing conditions.  
© Copyright 2009

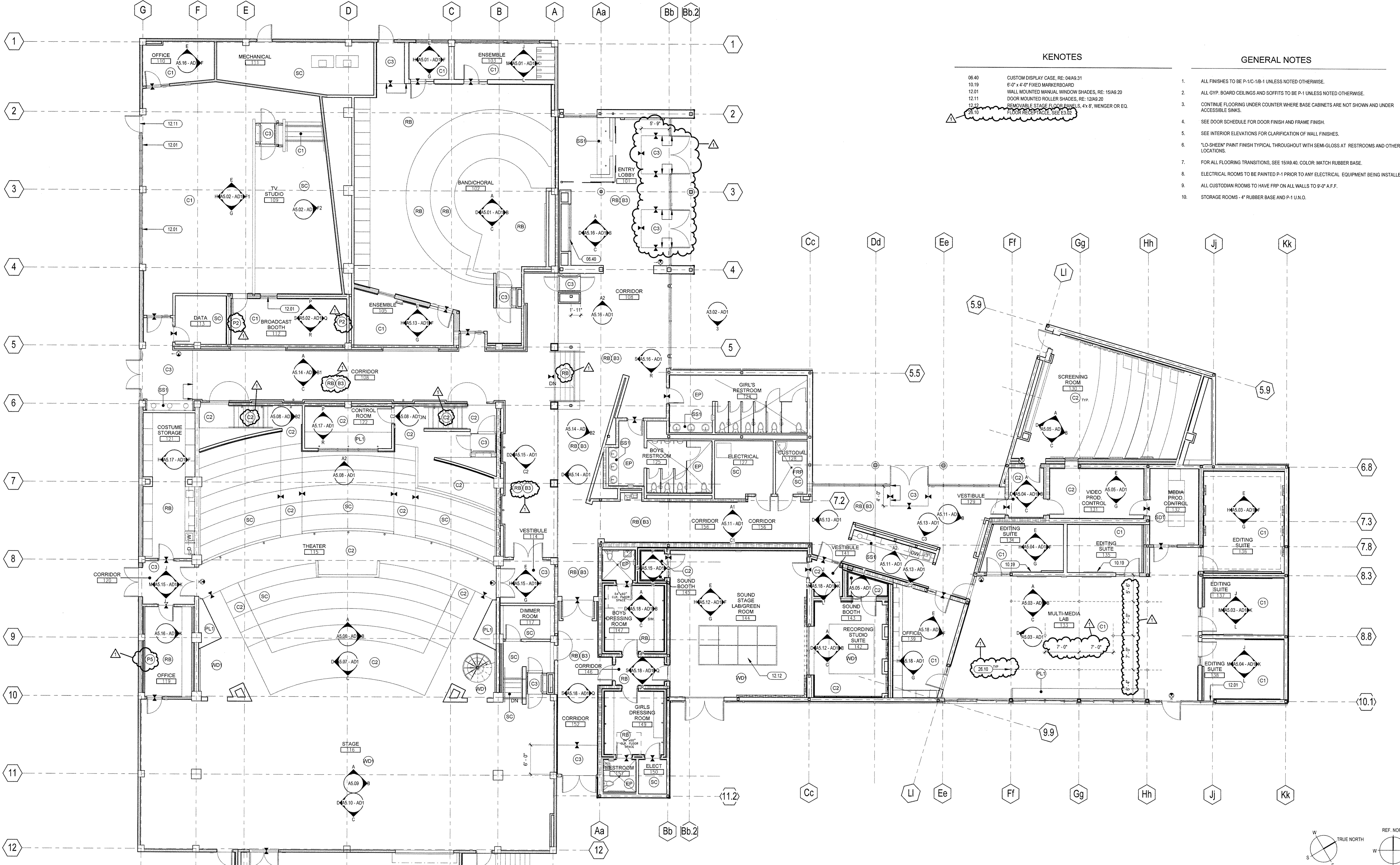
Media and Design Arts  
PTN: 61903-16  
Performing Arts Modernization  
PTN: 61903-17

South Tahoe High School  
Performing Arts Modernization  
and Media Arts Expansion  
1735 Lake Tahoe Blvd.  
South Lake Tahoe, CA 96150  
Developed for  
Lake Tahoe Unified School District

Author	Design	Check	Date
NEW	NEW	NEW	12/10/09
NEW	NEW	NEW	12/10/09
NEW	NEW	NEW	12/10/09

Job No.	27134-30
Date	DECEMBER 10, 2009
Drawn by	LPA
Checked by	SN
Scale	1/8" = 1'-0"

**FINISH PLAN**  
**A2.21 - AD1**



**KENOTES**

- 06.40 CUSTOM DISPLAY CASE, RE: 06A9.01
- 10.19 6'-0" x 4'-0" FIXED MARKERBOARD
- 12.01 WALL MOUNTED MANUAL WINDOW SHADES, RE: 15A9.20
- 12.11 DOOR MOUNTED ROLLER SHADES, RE: 12A9.20
- 12.12 REMOVABLE STAGE FLOOR PANELS, 4'x8', WENGER OR EQ.

**GENERAL NOTES**

1. ALL FINISHES TO BE P-1/C-1/B-1 UNLESS NOTED OTHERWISE.
2. ALL GYP. BOARD CEILINGS AND SOFFITS TO BE P-1 UNLESS NOTED OTHERWISE.
3. CONTINUE FLOORING UNDER COUNTER WHERE BASE CABINETS ARE NOT SHOWN AND UNDER ACCESSIBLE SINKS.
4. SEE DOOR SCHEDULE FOR DOOR FINISH AND FRAME FINISH.
5. SEE INTERIOR ELEVATIONS FOR CLARIFICATION OF WALL FINISHES.
6. "LO-SHEEN" PAINT FINISH THROUGHOUT WITH SEMI-GLOSS AT RESTROOMS AND OTHER WET LOCATIONS.
7. FOR ALL FLOORING TRANSITIONS, SEE 15A9.40. COLOR: MATCH RUBBER BASE.
8. ELECTRICAL ROOMS TO BE PAINTED P-1 PRIOR TO ANY ELECTRICAL EQUIPMENT BEING INSTALLED.
9. ALL CUSTODIAN ROOMS TO HAVE FRP ON ALL WALLS TO 9'-0" A.F.F.
10. STORAGE ROOMS - 4" RUBBER BASE AND P-1 U.O.

**LEGEND**

- (P1) INTERIOR PAINT (FIELD COLOR), KELLY-MOORE, COLOR: QW208-1 APPLE WHITE LRV 87
- (P2) INTERIOR PAINT (ACCENT COLOR), KELLY-MOORE TO MATCH SHERWIN WILLIAMS SW 0023, COLOR: PEWTER TANKARD
- (P3) INTERIOR PAINT (ACCENT COLOR), KELLY-MOORE TO MATCH SHERWIN WILLIAMS SW 7020 BLACK FOX LRV 8
- (P4) INTERIOR PAINT (ACCENT COLOR), KELLY-MOORE TO MATCH SHERWIN WILLIAMS SW 8416, COLOR: SASSY GREEN
- (P6) INTERIOR PAINT (ACCENT COLOR), KELLY-MOORE, COLOR: KM214-2 SALLY O
- (P6) INTERIOR PAINT (ACCENT COLOR), KELLY-MOORE, COLOR: KM379-3 BLUE LAKE
- (P7) INTERIOR PAINT (ACCENT COLOR), KELLY-MOORE TO MATCH DUNN EDWARDS DE5206, COLOR: CHAMBERLAIN
- (P8) EXTERIOR PAINT, KELLY-MOORE TO MATCH VISTA PAINT, COLOR: "SHADY SIDE" 1765
- (P9) 3" x 9" DALTILE WALL TILE, COLOR: WHITE #101, VERTICAL LAYOUT, RUNNING BOND PATTERN WITH STERLING SILVER GROUT COLOR BY LATICRETE OR EQ.
- (P10) 3" x 9" DALTILE WALL TILE, COLOR: NAVY #189, VERTICAL LAYOUT, RUNNING BOND PATTERN WITH GROUT COLOR: "33 TWILIGHT BLUE" BY LATICRETE OR EQ.
- (P11) PLASTIC LAMINATE CASEWORK, NEVAMAR, COLOR: BLACK PEARL
- (P12) RESIN PANEL BY 3FORM OR EQ., STYLE: CHROMA, COLOR: MOSS INFUSED - RENEWABLE FINISH, 1/2" TYP.
- (P13) 1/4" GLASS PANEL BY 3FORM OR EQ., STYLE: PRESSED GLASS, COLOR: VAPOR
- (P14) SOLID SURFACE BY CORIAN, COLOR: EARTH
- (WC) TACK PANEL, WALL TALKERS "TAC WALL" COLOR: QUARRY # C250-82, ASTM E84 (FLAME SPREAD) AND SMOKE DEVELOPED) 1/8"
- (WC) FABRIC WRAPPED ACOUSTICAL/TACKABLE PANELS, GULFORD OF MAINE OR EQ. STYLE: TEMPEST 2120 COLOR: 03S FLINT
- (WC) 2" FIBERGLASS DUCT LINER BOARD, COLOR: BLACK
- (WC) ECHO ELIMINATOR PANELS BY ACOUSTICAL SURFACES, COLOR: NAVY
- (WC) FABRIC WRAPPED ACOUSTICAL/TACKABLE PANELS, GULFORD OF MAINE OR EQ. STYLE: GROOVE 3497 COLOR: 010 GRAPHITE
- (WC) CUSTOM GRAPHIC BY ARCHITECT, PRINTED DIGITAL VINYL WALLCOVERING
- (WC) RECYCLED WALLCOVERING, MDC "BOLTA" STYLE: HAYFIELD, COLOR: SLATE "BB-HF-24"

**LEGEND CONT.**

- (WC) RECYCLED WALLCOVERING, MDC "BOLTA" STYLE: HAYFIELD, COLOR: MOONLIGHT "BB-HF-01"
- (WC) ACOUSTICAL WALLCOVERING, TRI-KES SOURCE ONE "TRANQUILITY" COLOR: ROOFTOP 2476/27
- (WC) ACOUSTICAL/TACKABLE PANEL FABRIC: GULFORD OF MAINE, STYLE: BAILEY 2296, COLOR: 012 KHAMI
- (WC) RECYCLED WALLCOVERING, MDC "BOLTA" STYLE: HAYFIELD, COLOR: 88-HF-20 SEA GULL
- (WB) 600 THERMALLY BLENDED VERTICAL BASKET WEAVE +/- 1% OPENNESS, COLOR: SILVER BIRCH
- (WV) WINDOW FILM BY 3M: FASARA, CLEO PRIVACY GLAZING FILM
- (R) RUBBER BASE, BURKE-MERCER, BLACK BROWN 523
- (B1) EPOXY FLOOR COVERED UP TO FORM BASE, RE: 06A9.10
- (B2) 4" SURFACE MOUNTED WOOD BASE, RE: 10A9.10
- (EP) EPOXY FLOOR COATINGS, REFER TO SPECIFICATION SECTION 096723
- (SC) SEALED CONCRETE
- (C1) SHAW CARPET TILE, STYLE: GLAZE 59962, COLOR: MOONSTONE 5220, MONOLITHIC INSTALLATION
- (C2) DESIGNWEAVE BROADLOOM CARPET, STYLE: URBAN GLAMOUR 28426, COLOR: 00559 CHARM
- (C3) WALKOFF CARPET, MANUFACTURER: SHAW CONTRACT, STYLE: BON JOUR TILE COLOR: EBONY
- (RB) RUBBER FLOORING BY MONDO, STYLE: TERRANOVA SHEET, COLOR: DARK GREY
- (SD) STATIC DISSIPATIVE RUBBER FLOORING, MANUFACTURER: STATWORX, STYLE: SD SERIES COLOR: 8266 BROTZWALD
- (WD) MASONRY STAGE FLOORING, PAINTED, SEE EQS. FOR PAINT COLOR
- (W2) 3/4" PLYWOOD HANGSOOT, PAINTED, SEE EQS. FOR PAINT COLOR
- (WB) 2-1/2" STACKED-SORGHUM BOARD BY KIRK, SEALED WITH AN EPOXY COATING ON ALL SIDES
- (F1) CURTAIN FABRIC, KM FABRICS, MAJESTIC 1000 PEWTER
- (F2) CONTRASTING STRIPE AT STAIR NOODS
- (F3) FINISH TRANSITION, RE: 15A9.40

**KEY PLAN**

