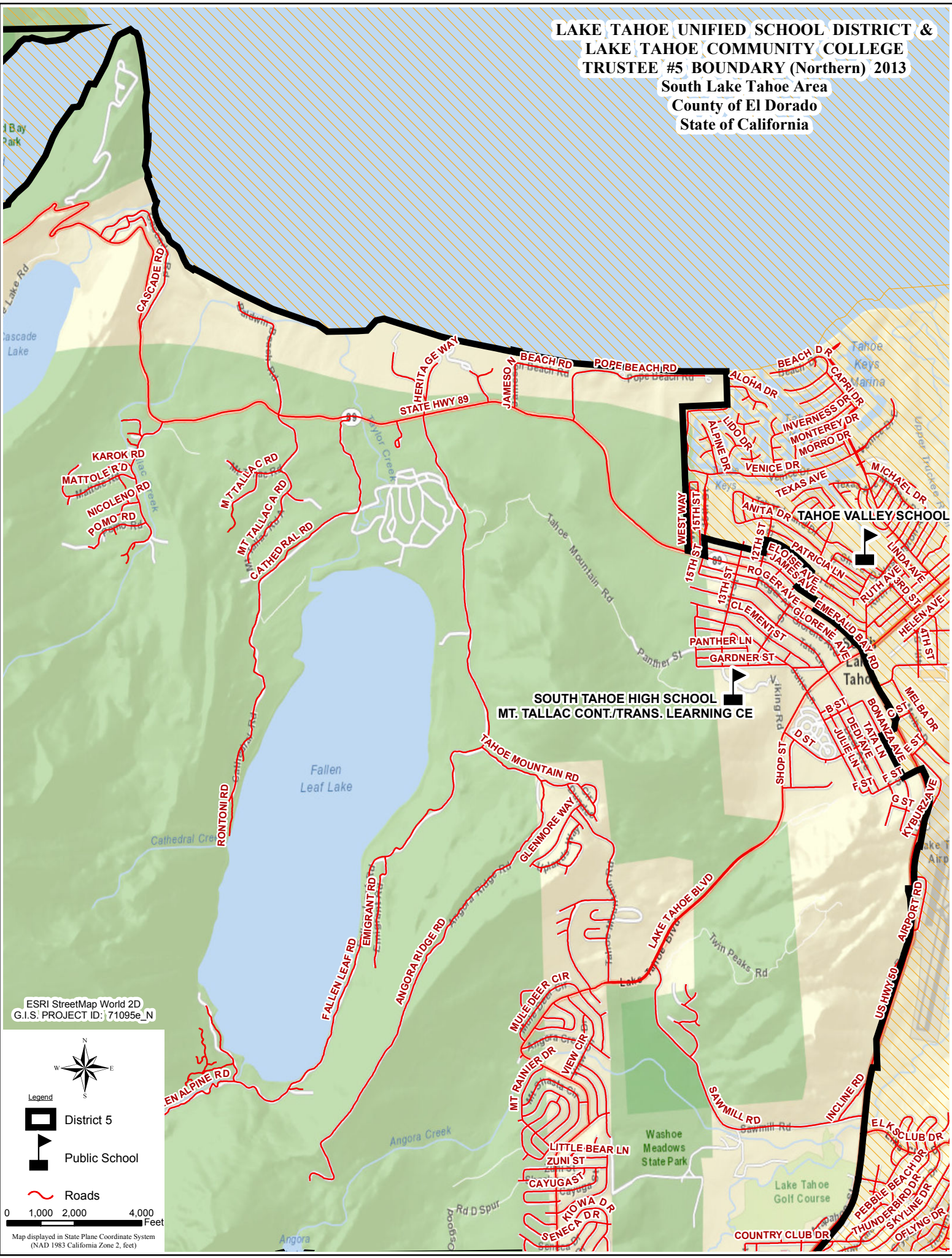





**LAKE TAHOE UNIFIED SCHOOL DISTRICT &  
LAKE TAHOE COMMUNITY COLLEGE  
TRUSTEE #5 BOUNDARY (Northern) 2013  
South Lake Tahoe Area  
County of El Dorado  
State of California**



ESRI StreetMap World 2D  
G.I.S. PROJECT ID: 71095e\_N



- Legend**
-  District 5
  -  Public School
  -  Roads

0 1,000 2,000 4,000 Feet

Map displayed in State Plane Coordinate System (NAD 1983 California Zone 2, feet)