

# LTUSD

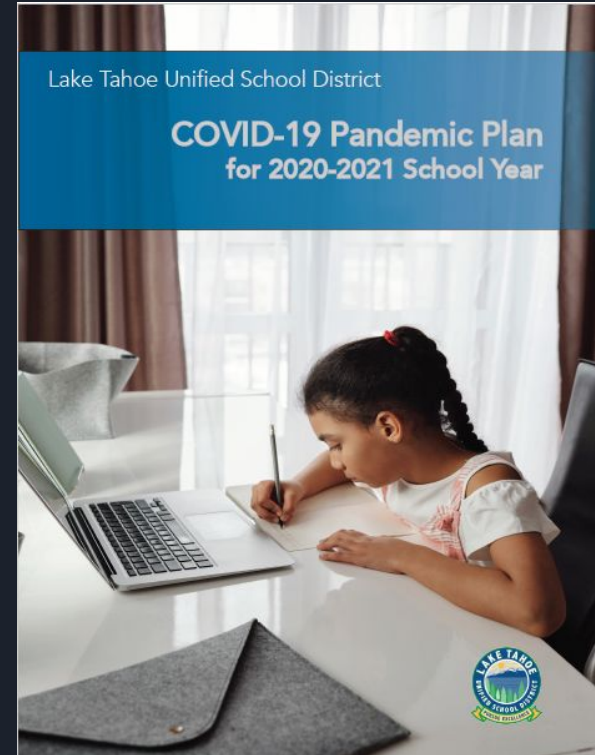
## Reopening: COVID-19 Pandemic Educational Plan 2020-2021 School Year

Presented for LTUSD School Board:  
Special Board Meeting  
July 30, 2020

# Reopening Task Force & Final Plan Development

The plan presented this evening is a culmination of work completed by the Reopening Task Force

- The task force met 9 times over 6 weeks throughout June & July
- Engagement in Collaborative Conversations
- The final plan was developed utilizing:
  - Input from Board, Task Force, Parents, and Community
  - Evidence based resources
  - State and Federal Educational Guidelines
  - Local, State, and Federal Health Guidance
  - Ongoing collaboration with Barton Health COVID-19 Specialists
- Recommendations made are based on *current* local COVID-19 community spread, safety information, and County indicators
- The plan is intended to be fluid, flexible, & safe for all students & staff
- The plan offers choices, and allows for planning for staff, students, families, and community



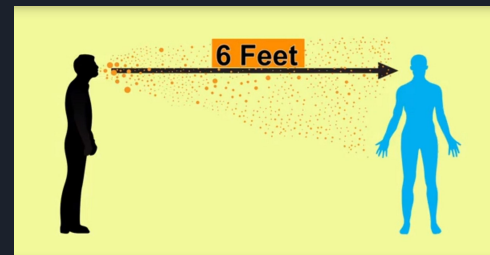
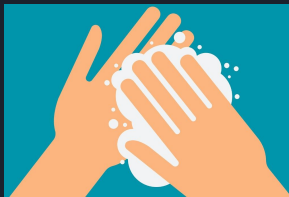
# State Guidance

## State Indicators for Distance Learning

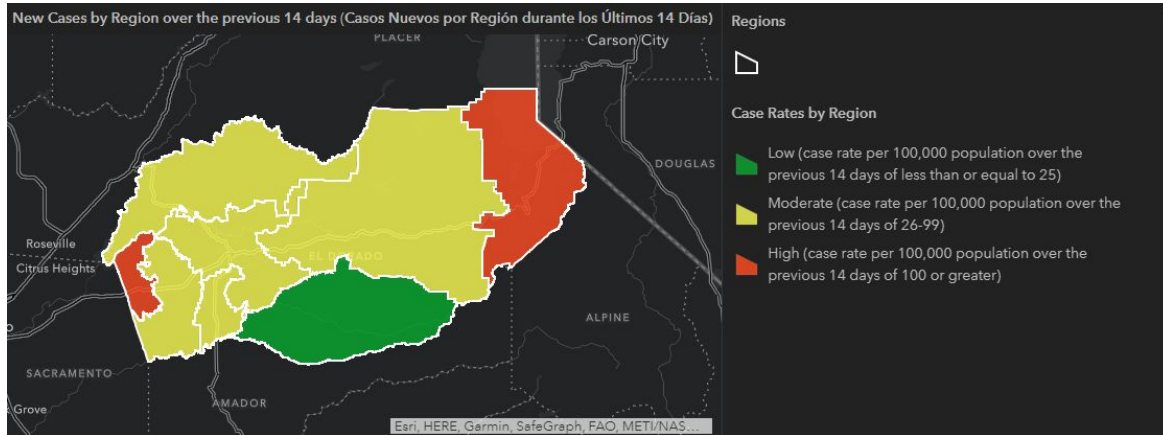
- COVID -19 Cases in El Dorado County - Monitoring List
  - Monitor local county information on the [El Dorado County Dashboard](#) for local information
- Testing and tracing capacity is sufficient in the local area
- Some In-person learning must occur for most at-risk students

## State Indicators for In-person Learning

- Masks **MUST** be worn for 3rd grade and up and all Adults
- Symptom checks are required
- Hand washing stations or increased hand washing is required
- Sanitation and disinfection is increased
- Quarantine protocols are in place



# El Dorado County South Lake Tahoe Region COVID-19 Case Rates as of July 29, 2020



Showing 1

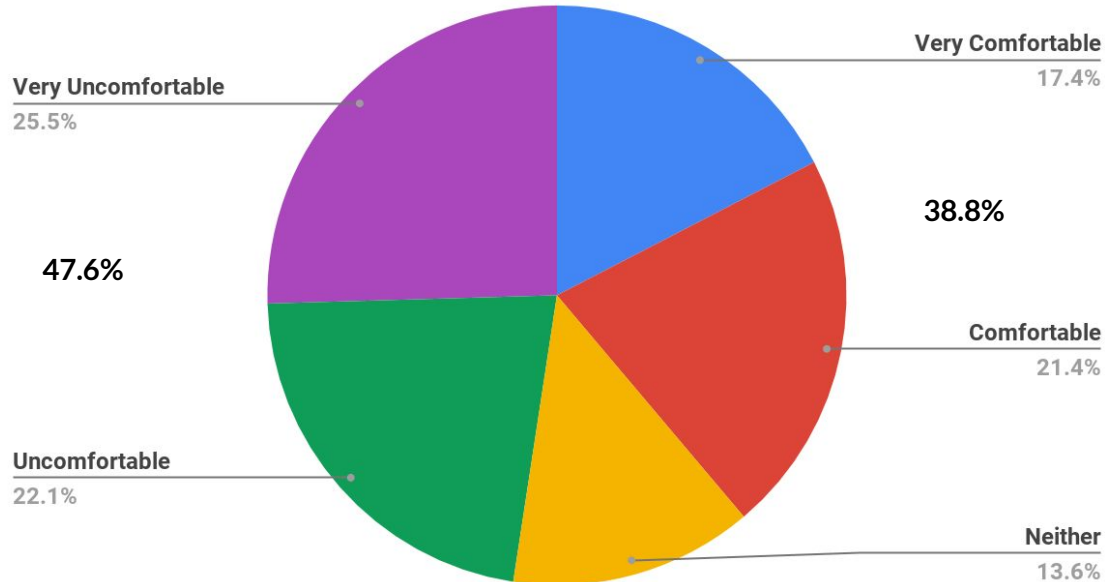
**New Cases and Rates (Last 14 Days): T...**

Region	Tahoe Region
New Cases	113
Region Rate	374 per 100,000
Rate	High
Category	

# Parent & Community Survey Input (7/20-7/24)

How comfortable are you with your child returning to traditional school during the COVID-19 Pandemic?

Return to School Comfort Level

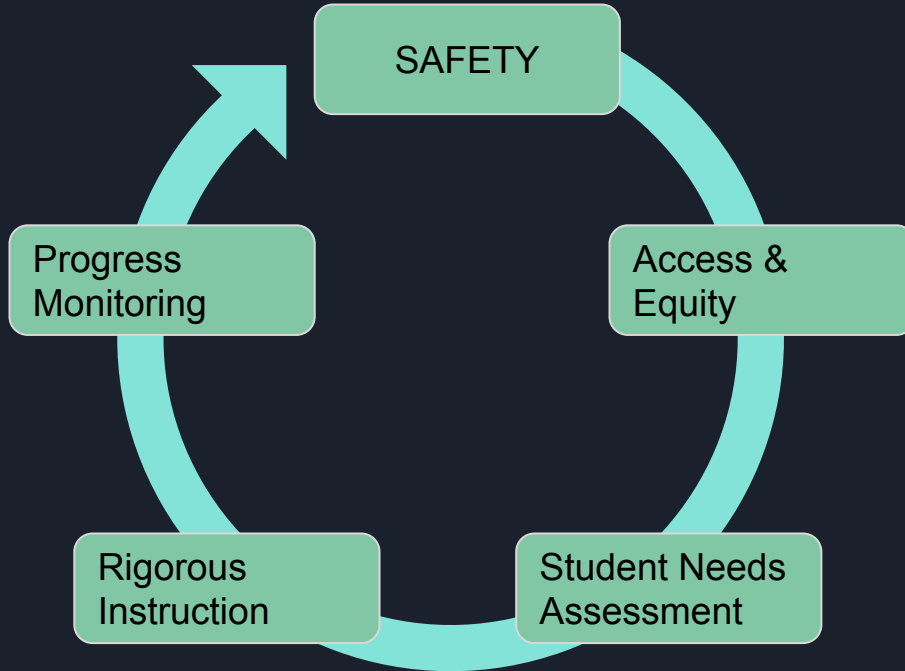


## Respondent Information

Very Comfortable	173
Comfortable	213
Neither	135
Uncomfortable	220
Very Uncomfortable	253

**TOTAL** 994

# Moving Forward



LTUSD's Commitment:

Engage *ALL* students in high levels of learning *EVERY* day resulting in increased proficiency and growth.

# Phases of the Pandemic Plan for Traditional School Settings

<b>Phase 1</b> <b>Distance Learning</b>	<b>Phase 2</b> <b>Hybrid Model</b>	<b>Phase 3</b> <b>Hybrid/ Modified Traditional</b>	<b>Phase 4</b> <b>Traditional</b>
<ul style="list-style-type: none"> <li>• LTUSD will follow recommendations from the CDC, CDPH, CDE, Cal/OSHA, and local public health agencies regarding transmission in the area (South Lake Tahoe)</li> <li>• Increasing and substantial community spread</li> <li>• Test positivity rate &gt;8% or Case Rate &gt;100/100,000</li> <li>• Health system capacity concerns (&gt;10% increase hospitalization, &lt;20% ICU beds, testing/tracing not sufficient)</li> <li>• School employees and contractors are permitted to be physically present in school buildings to conduct basic school operations, including live instruction, as determined by school</li> <li>• Masking AND physical distancing &gt;6 ft required for all</li> </ul>	<ul style="list-style-type: none"> <li>• LTUSD will follow recommendations from the CDC, CDPH, CDE, Cal/OSHA, and local public health agencies regarding transmission in the area</li> <li>• Community spread stable and/or decreasing</li> <li>• Health system has capacity, however testing and tracing efforts may not be sufficient to control the spread</li> <li>• Some businesses may be asked to remain closed while others are allowed to be open</li> <li>• Masking for grades 3-12 is required.</li> <li>• Masking or shields for grades. Preschool, TK-2nd is encouraged, but not required.</li> <li>• Masking or shields is required for all staff members.</li> <li>• Physical distancing &gt;6 ft required for all</li> </ul>	<ul style="list-style-type: none"> <li>• New cases and deaths within the local community continue to decrease for an additional 14 days at minimum.</li> <li>• Testing and tracing efforts are reliable for monitoring new cases</li> <li>• Overall number of infected individuals still indicates the need for social distancing to stop transmission</li> <li>• Masking for grades 3-12 is required</li> <li>• Masking or shields for grades Preschool, TK-2nd is encouraged, but not required.</li> <li>• Masking or shields is required for all staff members.</li> <li>• Physical distancing &gt;6 ft required for all</li> </ul>	<ul style="list-style-type: none"> <li>• Few, if any, active COVID-19 cases locally.</li> <li>• Community spread not expected to return.</li> <li>• Sufficient community immunity and availability of treatment.</li> <li>• COVID-19 specific Safety protocols no longer required.</li> <li>• Standard school safety procedures and protocols will continue to remain in place.</li> </ul>

**Each phase is assumed to be 6 weeks in length with movement between phases dependent on COVID-19 indicators**

**Note: In the event of increased risk of the spread of COVID-19 in our community, schools may return to Phase 1 (Distance Learning Model) during any phase.**



# LTUSD: Three options for Parents & Students

- **OPTION 1:** Traditional School Setting in Student's School of Enrollment
- **OPTION 2:** ILA - Independent Learning Academy
- **OPTION 3:** Elevated Digital Learning Academy  
*(a NEW school in LTUSD with its own enrollment)*





# Traditional Classroom based on Reopening Phases: What to expect

## RECOMMENDED

Students and Families that desire the return to a traditional school setting

Initially will start in Distance Learning for 6 weeks with a goal to move to Hybrid by mid-October depending on COVID-19 community spread and following indicators from Pandemic Plan

## FEATURES

Flexible movement through Phases in 6 week increments as determined by local health circumstances

Some In-Person Learning for small cohorts and individual students for whom equity and educational access is necessary

Goal is learn at school

Standards-based instruction w/ Grade Level appropriate curriculum

Health and Safety Guidelines in place


## WHAT TO EXPECT

Pivoting between Distance Learning, Hybrid Model, & Traditional School Model throughout the school year depending on the COVID-19 Pandemic

Daily Health Checks for students and families

Face Coverings unless exempt

Social Distancing Practices in place



# Independent Learning Academy (ILA): What to expect

## RECOMMENDED

For students and families that do not yet feel comfortable to return to school

Students and families that require flexibility in scheduling and access to curriculum

High level of parental support needed at home for success with instruction

## FEATURES

Learn at home

Independent learning program

Student meets weekly with a teacher online or in person to get curriculum material, assignments, & feedback


Available to students in grades TK-12

## WHAT TO EXPECT

Standards based curriculum book and instructional materials based TK-5

Grades 6-12 Edgenuity online courseware, standards based

Enrollment in Traditional School remains



# Elevated Virtual Learning Academy: What to expect

## RECOMMENDED

For students and families that are interested in a long-term virtual learning environment

Enrollment for the entire 2020-2021 school year preferred

## FEATURES

Enrollment in a new Virtual School in LTUSD grades TK-8

Fully online program

Daily teacher and peer interaction using videoconferencing

Online instruction with daily, live, teacher-led videoconferencing and pre-recorded lessons with an element of project-based learning

## WHAT TO EXPECT

Receive online face-to-face instruction and lessons

Curriculum and seat-time is scheduled

Access to extracurricular activities when they become available

LTUSD Teachers provide instruction



**STRONGER TOGETHER**



THANK YOU TO OUR STAFF, FAMILIES, AND COMMUNITY